

050903

RECEIVED  
LARAMIE COUNTY  
CHEYENNE, WY.

CERTIFIED LAND CORNER RECORDATION

NOV 9 AM 9 08

DESCRIPTION OF CORNER EVIDENCE FOUND, AND ORIGINAL RECORD (If known)

Found no evidence of previous monumentation.

1/4  
S.26 S.25  
T.17N., R.62W.  
6th P.M.

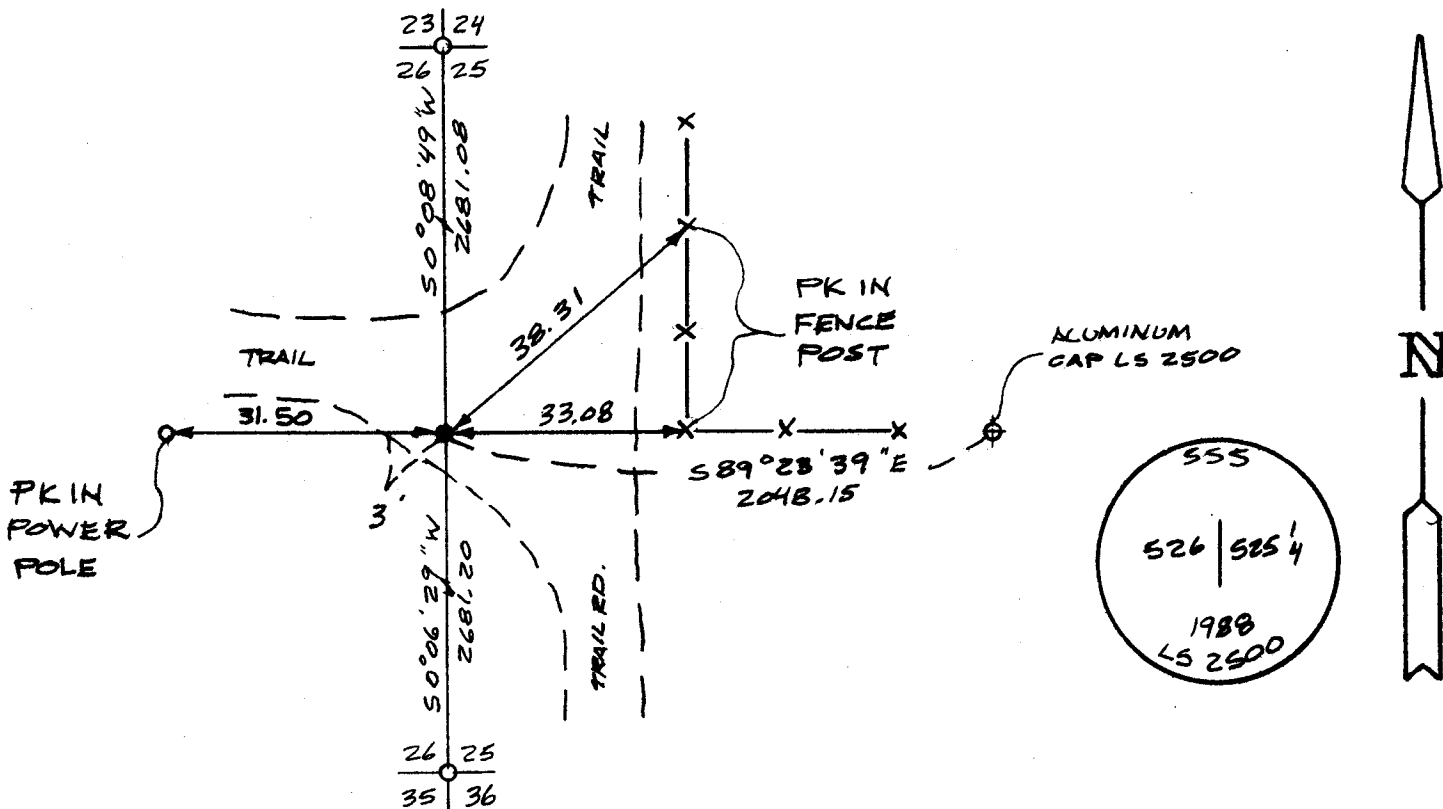
G.L.O. Record: Limestone 18" x 12" x 3" set 10" deep marked 1/4 on West side.  
Set by Charles A. Caton & Luther Poland, Deputy Surveyors, July 23, 1873.

DESCRIPTION OF MONUMENT AND ACCESSORIES ESTABLISHED  
TO PERPETUATE THE ORIGINAL LOCATION OF THIS CORNER:

At the corner: Set 5/8" x 18" rebar with 2" Aluminum Cap set 0.4' below surface & stamped as shown below on line with fence East & 33' West of fence North.

Accessories : See ties below.

SKETCH, WITH COURSE AND DISTANCE TO ADJACENT CORNER IF DETERMINED IN THIS SURVEY.  
(May Sketch or Paste Reproduction on Reverse Side.)



I, John A. Steil certify that I have carefully performed or reviewed the work done on the diagrammed corner as reported on this recordation form and approve the same.

John A. Steil L.S. 2500  
Signature of Surveyor Registration No.

STATE OF WYOMING,  
Office of Clerk and Recorder,  
County of \_\_\_\_\_

This "corner record" was filed for record on the \_\_\_\_\_ day of \_\_\_\_\_, 19\_\_\_\_, was noted on the cross-index plat and is assigned page No. \_\_\_\_\_, in book No. \_\_\_\_\_.

Cross Index No.	County Official			
	T-21	T. 17N	R. 62W	Mer. 6th
_____	_____	_____	_____	Mer.
_____	_____	_____	_____	Mer.
_____	_____	_____	_____	Mer.
_____	_____	_____	_____	Mer.
_____	_____	_____	_____	Mer.
_____	_____	_____	_____	Mer.
_____	_____	_____	_____	Mer.